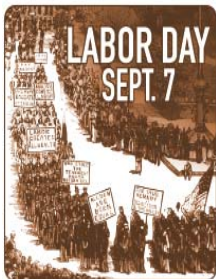


# NORTH CHANNEL★STAR

*Your News, Your Newspaper*

Serving all of the North Shore -- Channelview, Cloverleaf, Sheldon, Galena Park, Jacinto City  
VOLUME 8, NO. 35 (#339) THURSDAY, SEPTEMBER 3, 2020 www.northchannelstar.com

MONDAY



© 2020 by King Features Syndicate, Inc.  
World rights reserved.

**COVID-19**  
Cases as of  
September 1, 2020

**HOUSTON AREA**  
19 COUNTIES

167,641 POSITIVE  
2,118 DEATHS  
133,105 RECOVERED

**TEXAS**

636,485 POSITIVE  
12,893 DEATHS  
507,499 RECOVERED

**UNITED STATES**

6,068,139 POSITIVE  
184,450 DEATHS  
2,184,825 RECOVERED

**WORLDWIDE**

25,587,737 POSITIVE  
852,851 DEATHS  
16,882,698 RECOVERED

## Area schools virtually reopen Sept. 8

**NORTH CHANNEL** – School districts in this area are planning on starting classes on Tuesday, September 8. Some had planned an earlier start, in August, but changed their schedule on the advice of health authorities.

Class instruction will open at first only virtually, or on the internet, and after a period of several weeks, will change to a hybrid model where parents can choose to continue at-



Galena Park's new Superintendent Dr. John Moore

home learning, or face-to-face in-person in school. In Sheldon and Galena Park, this change will occur in four weeks. In Channelview the change will be in three weeks. However, all districts have stated that they will evaluate the health concerns at the time of change-over, and the schedule may be adjusted further.

In Galena Park ISD a new superintendent will be in charge, Dr. John Moore.

Moore has been educator in the Galena Park ISD system for nearly 30 years. Dr. Moore is overseeing the unusual situation of starting school in the midst of a pandemic. He has instituted a number of practices meant to ensure the safety of students and staff when they finally meet in face-to-face classroom situations.

Measures that Galena

See *Schools Open*, page 3

## Hurricane relief for Disaster areas

**ORANGE** – Texas Senator Ted Cruz capped a day of looking into the remnants of Hurricane Laura by saying, "Texans all across the state, Texans here in southeast Texas are breathing a giant sigh of relief right now. This hurricane could have been much, much worse. We just completed an aerial tour of the region and the damage is much more contained than prior hurricanes have been. Obviously, our hearts are heavy for our neighbors in Louisiana. We toured some of that damage as well. The damage in Louisiana is significantly greater,



President Trump, Louisiana Governor John Bel Edwards, FEMA officials, and others walk through the debris of the hurricane Laura disaster that struck Lake Charles, and other portions of Southern Louisiana.

but given the magnitude of this storm, it could have been so much worse."

And the storms will get worse: Hurricane Harvey almost exactly three years before holds the record for fastest and strongest intensifications in the Gulf of Mexico, for two weeks it held the record for fastest and strongest intensification anywhere then Hurricane Irma beat that. Laura went from tropical storm 35 miles per hour winds to 150 miles per hour overnight.

Hurricane relief is needed by neighbors in eastern Louisiana area who are

See *Hurricane Relief*, page 8

### Emergency Care in East Houston



**HCA Houston**

**ER 24/7**

**Don't avoid or delay lifesaving emergency care. We are taking extra precautions to keep you safe.**

- Comprehensive emergency services, 24 hours a day, seven days a week, including holidays
- Board-certified emergency medicine physicians
- On-site lab testing and imaging
- Accepts most major insurance plans

**HCA Houston ER 24/7 - North Channel**

6191 E Sam Houston Pkwy N, Houston, TX 77049  
281.454.2600 | HCAhoustonhealthcare.com/er-24-7

SE-20-004\_07.21.20

## NS Rotary, Pct. 2 help with food distribution



North Shore Rotary along with Harris County Precinct 2 gave away free food last week while supplies lasted at Flukinger Community Center in Channelview. Look for more food giveaways in the near future. Follow this newspaper, or Precinct 2 at hcp2.com.

## Phony COVID test site in North Shore

*By Michelle Leigh Smith*

**HOUSTON** – (August 17, 2020) Unidentified workers at an unauthorized COVID-19 testing site were taking test swabs on Saturday, August 15, in the parking lot of Woodforest Presbyterian Church, 15330 Wallisville Rd., Houston, TX 77049. The church has served Harris County for 60 years and is located in an unincorporated area of Harris County on a busy commercial corner across from a WalMart. One of the church members asked the testers to stop, and they packed up and quickly left the pre-

mises. They left behind broken cotton swabs and a lot of unanswered questions.

Ann Martin, treasurer for Woodforest Presbyterian Church said, "Our church members were suspicious because the phony testers were wearing masks, gloves, and face shields – but not the full protective gear seen at legitimate testing sites. We believe this is the first phony COVID-19 testing site in Houston." Martin is concerned by reports from Louisville, KY where workers charged \$240 for the test and collected credit card, Social Security, and

Medicare numbers.

"We urge anyone who may have been a patient at this fraudulent testing site to get re-tested by a legitimate healthcare organization," says Martin. "They will also need to watch for identity theft and misuse of their personal information."

Martin also reported the issue to Precinct 3 Constable

See *PHONY TEST SITE*, page 6



★

COMMUNITY NEWS

★

SENATOR CAROL ALVARADO  
& WORKFORCE SOLUTIONS PRESENT

SENATE DISTRICT 6  
VIRTUAL JOB FAIR

Save the date  
SEPTEMBER 9TH, 2020  
10:00 AM-2:00 PM

GREATER HOUSTON  
PARTNERSHIP

GREATER  
NORTHSIDE  
CHAMBER  
OF COMMERCE

Baytown  
CHAMBER OF COMMERCE

North Houston District

DEER PARK  
Chamber of Commerce

South Channel  
Chamber of Commerce

East End Chamber  
of Commerce

Economic Alliance  
HOUSTON PORT REGION

SOUTH HOUSTON  
CHAMBER OF COMMERCE

South Belt-Ellington  
Chamber of Commerce  
*The Aviation Corridor of the Gulf Coast*

East Harris County  
MANUFACTURERS ASSOCIATION

Making Good.

Employers and job seekers can email  
Michael.Gutierrez@wrksolutions.com for more information

Workforce Solutions

CAROL ALVARADO  
Texas State Senator, District 6

## Harris County test sites

Testing Helps Protect You  
and Your Family from COVID-19

New HCPH Mobile Test Site  
Locations for August 31-  
September 5

Houston – You could have  
COVID-19 and be spreading  
it to your family and friends  
without even knowing it!  
About 40% of infected  
people have no symptoms,  
so get tested to know if you  
need to protect the people  
around you. It's now  
quicker to get tested and to  
get your test results back,  
available in 2-5 days.

There will be 6 mobile  
locations, open Monday-  
Saturday and closed 1 day.  
Children can be tested at  
mobile sites. Register at  
www.hcph.org or call  
832-927-7575. Keep the  
authorization code to show  
at the test site. All locations  
are drive-through, so sites  
may need to close  
temporarily due to extreme  
weather.

Mobile locations for August  
31-September 5, Monday-  
Saturday.

• Thompson Elementary  
School  
12470 Walters Rd, Houston,  
TX 77014  
Closed Tuesday, September 1

• Pirates Bay Waterpark  
5300 E Rd, Baytown, TX 77521  
Closed Wednesday,  
September 2

• George Bush Park- Fun Fair  
Positive Soccer  
20150 Westheimer Pkwy,  
Houston, TX 77082  
Closed Thursday, September 3

• Sam Houston Race Park  
7575 North Sam Houston  
Pkwy W, Houston, TX 77064  
Closed Friday, September 4

• M. O. Campbell Education  
Center  
1865 Aldine Bender, Houston,  
TX 77032  
Closed Wednesday,  
September 2

• San Jacinto College - North  
Campus

5800 Uvalde Rd, Houston, TX  
77049  
Closed Saturday, September 5

The two stationary sites in  
Pasadena and Cy-Fair are still  
offering Surge Testing, with  
greater testing capacity and  
quicker test results, in 2-5  
days. These sites also have  
extended hours from 4-8 pm  
one day a week: Tuesdays in  
Cy Fair at Pridgeon Stadium  
and Thursdays in Pasadena at  
San Jacinto College Central  
Campus.

For testing at the stationary  
sites, visit  
www.doineedacovid19test.com  
or call 832-927-7575. Register  
and select an appointment  
time. People must be 13 or  
older to be tested at these  
sites. They need to keep their  
assigned voucher ID to be  
tested and remember the  
username and password they  
registered with to get their  
test results, in 2-5 days. The  
stationary sites are open  
Monday-Saturday.

# Laura shows pollution mounts in Gulf Coast

The security of petrochemical plants during hurricanes comes into question even as some predict more powerful and frequent storms.

Hurricanes Laura and Harvey set records for fastest and strongest intensification for the Gulf Coast from 35 miles per hour to 150 miles per hour winds, also both initiated significant releases of pollutants.

Laura's are estimated at about 4 million pounds and Hurricane Harvey had over twice that amount. Many will remember 2017, Hurricane Harvey caused French-owned Arkema plant in Crosby, to lose power, igniting a fire and produce a large pillar of acid, black smoke; residents within a 1.5 mile radius were evacuated.

This time most of Texas was spared although Beaumont and Port Arthur plants had to prepare for and shut down before the storms. Louisiana was it by intensive winds, flooding, and a chemical fire was recorded in Westlake.

The shut down of a plant quickly often requires the release of compounds and gases in excess of what a plant is allowed in a year. Plants filed notices to regulators and a single methanol production plant accounted for most of the pollutants released. A burn off of 3.5 million pounds of carbon dioxide was accomplished before workers could leave, spills be avoided, and even worse emissions allowed.

Texas discharged over 13 million pounds of toxic chemicals into waterways in 2007. More than 87,000 pounds of those toxoids were cancer-causing chemicals like arsenic, chromium and lead.

The Environmental Protection Agency declares overall, hazardous impacts to air quality from Hurricane Laura in the Beaumont/Port Arthur area have been limited. After screening 21 of 28 facilities that Texas Commission on Environmental Quality (TCEQ) referred to EPA, ASPECT made two detections, both of isoprene. Only one of these detections, at 1.55 parts per million, exceeded TCEQ's AMCV of 1.4 parts per million. Both detections were west of Port Arthur. Results from air monitoring were reported above the detection limit at two locations of 84 for total volatile organic compounds. The detections were temporary and do not seem to indicate a contaminant plume.

With the plant ablaze in the background alarms and the governor's warning to turn off their air conditioners, seal their homes and stay indoors, was not quite as reassuring as the EPA Dallas office. Early Thursday a BioLab plant with an unknown amount of chlorine began to decompose, it ignited. A small crew from BioLab tried to extinguish the flames before calling state police for help shortly before 10 a.m.

Chlorine gas can be toxic and cause blistering of the skin, burning sensations in the nose and throat and respiratory distress. Local fire crews rushed to the scene, Louisiana Department of Environmental Quality hurriedly installed air-quality monitors, and the Environmental Protection Agency got a plane to monitor the situation from the air. The fire had been extinguished by Thursday night but a second one erupted, and the radius of the shelter-in-place order was expanded.

Damage resulting from Hurricane Laura's most illustrious example, where petrochemical plants, Superfund sites, refineries, oil and gas wells, and a network of pipelines are found. While some major oil producers, including Exxon, denied being damaged by the storm, other companies were still assessing damage.

The Gulf Coast is plagued by steadily increasing runoff pollution from industry, roads, agriculture, and septic tanks. Urban development near the Gulf has only made this problem worse.

Just under three quarters of the nation's chemical production occurs within the Gulf Coast, which has led to multiple chemical and petroleum spills within the last decade.

Many municipalities don't safely dispose of pesticides, acids, paints, and solvents, they wind up in the Gulf Coast, too.

Since the 1950s, most of the sea grass beds in Galveston Bay have been lost, damaging marine life habitats. Agricultural runoff and septic system drainage contribute to excessive algae growth that shades the grass and sucks oxygen from the water.

More than 25,000 acres of freshwater wetlands around Galveston Bay were lost due to development in recent years. The bay loses more than 2,500 acres of freshwater wetlands per year.



## Water District Notice of Public Hearing on Tax Rate

Harris County Water Control and Improvement District No. 1 will hold a public hearing on a proposed tax rate for the tax year 2020 on September 15, 2020 at 06:00 PM. It is anticipated said hearing will be held via Zoom telephone and/or video conference pursuant to Texas Government Code, as amended, and as modified by the Governor of Texas in the Governor's proclamation concerning the COVID-19 pandemic. Meeting access by Zoom teleconference/videoconference is: 1-346-248-7799, Meeting ID: 915 0231 6820, Passcode: 487431.

Your individual taxes may increase at a greater or lesser rate, or even decrease, depending on the tax rate that is adopted and on the change in the taxable value of your property in relation to the change in taxable value of all other property. The change in the taxable value of your property in relation to the change in the taxable value of all other property determines the distribution of the tax burden among all property owners.

FOR the proposal: Ray Mullins, Bobby Birdsong, Harvey Little, Kenneth Boudreaux, and John Wright  
AGAINST the proposal: None  
PRESENT and not voting: None  
ABSENT: None

The following table compares taxes on an average residence homestead in this taxing unit last year to taxes proposed on the average residence homestead this year.

	Last Year	This Year
Total tax rate (per \$100 of value)	0.360000	0.340000
	Adopted	Proposed
Difference in rates per \$100 of value		-0.020000
Percentage increase/decrease in rates(+/-)		-5.56%
Average residence homestead appraised value	\$116,676	\$132,617
General homestead exemptions available (excluding 65 years of age or older or disabled persons exemptions)	\$0	\$0
Average residence homestead taxable value	\$116,676	\$132,617
Tax on average residence homestead	\$ 420.83	\$ 450.90
Annual increase/decrease if proposed tax rate is adopted(+/-)		\$ 30.87
and percentage of increase(+/-)		7.35%

### NOTICE OF TAXPAYER'S RIGHT TO ELECTION TO REDUCE TAX RATE

If the district adopts a combined debt service, operation and maintenance, and contract tax rate that would result in the taxes on the average residence homestead increasing by more than eight percent, the qualified voters of the district by petition may require that an election be held to determine whether to reduce the operation and maintenance tax rate to the voter-approval tax rate under Section 49.23603, Water Code.

The 86th Texas Legislature modified the manner in which the voter-approval tax rate is calculated to limit the rate of growth of property taxes in the state.



281-328-5869



## Home Health Care

Skilled Nursing, Physical Therapy, Occupational Therapy, Speech Therapy, Medical Social Worker, Home Health Aide, Hospice Services  
\*Physical Therapy Position Available

CALL TODAY TO SEE IF YOU QUALIFY FOR MEDICARE FUNDED HOME HEALTH CARE  
Physical Therapy Position Available  
Locally owned and Operated by Tabatha and Jonathan Brady

### Non-Discrimination Policy

No client shall be, on the grounds of race, color, national origin, age, sex, disability or handicap, sexual orientation, marital status, religion or status with regard to public assistance or veteran status, excluded from admission to services through Omnix Health Care Services, Inc.

CROSBY'S HOME  
TOWN HOME CARE



# COMMUNITY NEWS

## Schools reopen, Hurricane revives talk of Ike Dike

CONTINUED FROM PAGE 1

Park classroom buildings will include are ultra-violet light machines, which are so bright that they kill all the germs in the room. Dr. Moore says there is one of these lights for each campus, and will be used daily in the classrooms. In addition, all surfaces including desks and other furniture will be sprayed daily with a mist cleaning machine. Dr. Moore says “you’ll actually see the mist come out and clean the top of the desks.”

To reassure parents and the public, Dr. Moore has made a video, shown on local Channel 2 television, demonstrating these cleaning methods.

Additional safety measures include wearing face masks for all students 1st through 12th grade, and all district personnel. This will also include parents and visitors. The district will have masks available for each person or student.

However, temperature checks and COVID-19 testing will not be done on a regular basis, but school nurses are available if someone exhibits symptoms. Self monitoring at home is encouraged, and will be instructed.

Dr. Moore said that nurses and staff will work to educate the school community on the importance of social distancing, frequent handwashing, good hygiene practices, and staying home when ill.

The other area districts are following similar safety and cleaning practices, which are expected to be necessary for most of the school year.

### HURRICANE LAURA BRINGS RENEWED PITCH FOR IKE DIKE

As thousands fled southeast Texas ahead of Hurricane Laura, Texas A&M promoted an Ike Dike as a critical way to protect the region from devastating damage.

Texas escaped a direct hit from Laura, which made landfall as a Category 4 storm in Cameron Parish, Louisiana, just east of Port Arthur. Despite the state’s luck this time, Texas A&M marine scientists urged action on their proposal to build a series of barriers, levees and gates that would close off Galveston Bay from storm surge.



The IKE DIKE would include two huge swinging gates, that would block the storm surge from a Hurricane, and protect the development around Galveston Bay.

William Merrell, a professor at Texas A&M-Galveston and a former president of the school, helped develop the plan after Hurricane Ike devastated Galveston in 2008, resulting in \$30 billion in damages and killing more than 50 people.

Cost estimates for the Ike Dike range from \$10 billion to \$20 billion. The Army Corps of Engineers and Texas General Land Office are finishing a major feasibility study for the Texas Coast that includes a coastal surge protection plan that incorporates many features of the Ike Dike. The plan is expected to be available for public

See Ike Dike, page 6

## Job Fair at TexRenFest

Todd Mission, TX (August 24, 2020) – The Texas Renaissance Festival will hold their annual Job Faire on September 5 and 6, 2020 at the Texas Renaissance Festival grounds starting at 9 a.m. each day.

The two-day Job Faire is an opportunity for vendors to fill their staffing needs for the 2020 season. Different vendors could be on hand each day of the Job Faire, so those interested in securing a spot are encouraged to attend both days.

Be prepared to fill out an application, bring a resume and a face mask as many vendors will hold interviews onsite at their shops. If hired, you will be directed to go to the TRF Pass Office for your parking pass and ID, and face masks are required in the pass office.

More than 4,000 jobs make up the Texas Renaissance Festival. Independent vendors will be interviewing for many positions such as hawkers, food and merchandise sales, food prep, games, rides, and more. Applicants should be

prepared to work nine (9) consecutive weekends, dress in costume, wear a face mask, and learn the King’s English.

In season, all TRF staff and Vendor employees will have a temperature screening prior to each shift that will be logged each festival day. Anyone with a fever will be sent home. Employees who are feeling symptomatic will be asked to stay home. Vendors will be required to follow protocol and policies as provided by Open Texas and the CDC.

UPDATE to Job Fair information on Page 2:  
Job Seekers register at <https://wrksolutions2easyvirtualfair.com/prefair>  
Employers at <https://wrksolutions.getyourbooth.com>

### HARRIS COUNTY PURCHASING FREE PPE REQUEST

Harris County is now offering the ability for businesses and nonprofits to obtain and utilize personal protective equipment (touchless thermometers, face masks and gloves) to help protect their employees for FREE. This is critical in helping our community get back to work and stay at work.

#### WHO QUALIFIES?

All commercial and nonprofit entities in Harris County providing goods or services directly to the public are eligible to register for FREE.



Supplies will be offered for FREE. Due to limited supply, every consideration will be given in an attempt to meet demand.

#### HOW TO APPLY:

For PPE request form or questions, please visit:

<https://purchasing.harriscountytexas.gov/Pages/PPERequest.aspx>

E-MAIL [BusPPEReq@pur.hctx.net](mailto:BusPPEReq@pur.hctx.net) call 713-274-4400.





**Luis F. Garcia, CPA**  
Attorney at Law  
13364 Woodforest Blvd  
Houston, TX 77015  
713-999-8006

[E.luis@luisgarcialaw.com](mailto:E.luis@luisgarcialaw.com)  
[www.luisgarcialaw.com](http://www.luisgarcialaw.com)

**\*PERSONAL INJURY   \*SLIP/TRIP AND FALL**  
**\*AUTOMOBILE ACCIDENTS   \*TRUCK ACCIDENTS**  
Se Habla Espanol

**NORTHSHORE VACUUM**  
Janitorial Supplies & Floor Care

729 Uvalde Road  
Houston, TX 77015  
Phone: 713-451-3247  
[northshorevac@comcast.net](mailto:northshorevac@comcast.net)

Hours: Mon. - Fri  
9:00 am - 5:30 pm  
Saturday  
9:00 am - 3:00 pm

**Rodrigo “Rodney” Sanchez**  
Repair Work 100% Guaranteed  
Bags & Belts for all vacuums including Kirby  
Sales & Service-New & Used-Trade Ins  
Do It Yourself-Professional Pest Control Supplies  
Equipment Rental

[www.northshorevacuum.net](http://www.northshorevacuum.net)



**JULY 30, 2020**  
**NORTH CHANNEL STAR**  
**PICK-UP LOCATIONS**

**NORTH SHORE**  
North Channel Chamber Office, I-10 in Woodforest Bank Bldg  
Pineforest Jewelry, Uvalde Rd  
Carter-Conley Funeral Home, 13701 Corpus Christi St.  
San Jacinto College North, Student Center & Library  
Fonteno Court House, Wallisville Rd  
Sellers Brothers Market, Uvalde Rd  
YMCA, Wallisville Rd.  
Kroger’s, Woodforest @ Beltway 8  
Sen. Sylvia Garcia office, in Woodforest Bank Bldg  
North Channel Library, Wallisville Rd  
Water District # 21, Sheldon Rd

**CHANNELVIEW**  
Woodforest Bank, Sheldon Rd  
Post Office, Sheldon Rd  
Woodforest Bank, Sheldon Rd  
Channelview Admin Bldg, Sheldon Rd  
Holiday Inn, I-10 E  
Martin Luther King Community Ctr., Lorenzo St.  
Water District #47, Woodforest Blvd  
Chevron, Woodforest & Uvalde  
Bonfire Wings, Woodforest Blvd  
Serena Donuts, Woodforest Blvd  
Pine Trails Community, Woodbend Dr

**SHELDON**  
Sheldon ISD Admin Bldg.  
Kroger’s, Normandy at Woodforest  
Sheldon ISD Transportation  
HCA Houston 24/7, Beltway 8

**CLOVERLEAF**  
HC WCID #36, Hollywood St  
Grayson Community Center, Corpus Christi St  
Galena Park Admin Building, Beltway 8 at Woodforest  
CommunityBank of Texas, I-10 E @ Freeport  
North Channel Assistance Ministries, Bonham @ Freeport  
Chevron, I-10 West

**JACINTO CITY**  
City Hall, Main Street  
Community Center/Senior Center, Oates Rd  
Capital Bank, I-10 E  
Jacinto City Branch Library, Akron St  
State Rep Ana Hernandez office, Mercury Drive  
Sellers Brothers Market, Market St  
Market Street Feed Store, Market St  
Mr. Mercury Gas Station, Mercury Dr  
Jacinto City Parks & Recreation, Mercury Dr  
Chevron, Market St

**GALENA PARK**  
Baggett Community Center, Keene St  
Galena Park City Hall, Clinton Drive  
Galena Park Library, Keene St  
United Comm. Credit Union, 16th St  
Galena Park Community Crt, Keene St  
Middletown Super Market, Clinton Dr  
Exxon King Fuel, Clinton Dr  
Galena Park Medical Clinic, Clinton Dr

If you would like to be a PICK-UP LOCATION, let us know.  
713-266-3444 or [northchannelstar@gmail.com](mailto:northchannelstar@gmail.com).

REV 01/2020

Now is a good time to subscribe to the

**NORTH CHANNEL  STAR**

**SUBSCRIPTION RATES by Mail**

6 months ..... \$25.00  
12 months ..... \$45.00

Complete the form below, and return with payment to:

**NORTH CHANNEL STAR**  
5906 Star Lane, Houston, TX 77057

Date \_\_\_\_\_

MAIL TO:

Name \_\_\_\_\_

Address \_\_\_\_\_

City \_\_\_\_\_ State \_\_\_\_\_ Zip \_\_\_\_\_

Method of Payment: ☐ Check or M.O.   ☐ Credit Card

Credit Card No: \_\_\_\_\_

Name \_\_\_\_\_ Expiration \_\_\_\_\_

Security Code \_\_\_\_\_ Address for Credit Card \_\_\_\_\_

Signature \_\_\_\_\_



★

OPINION

By BILL KING



## Hurricane Laura's Wake-Up Call for Houston

In 2009, I served on a State task force to study the aftermath of Hurricane Ike and to make recommendations to mitigate the damage of future storms. At one of those task force meetings, a disheveled Texas A&M professor appeared and calmly announced that he had the solution to the problem – a coastal barrier that would prevent a hurricane storm surge from ripping through the Houston area.

Frankly, we had heard a lot of kooky ideas at the task force meetings and my first reaction to Bill Merrill's proposal was that it was just one more. But as he began to lay out his proposal, the more it became apparent to me and others on the task force that he might be on to something. Thus, the Ike Dike was born.

The task force chair, former County Judge Robert Eckels, and I soon became advocates for Merrill's plan and we helped form an intergovernmental corporation between several coastal counties to begin laying plans for a coastal barrier. We asked then Governor Rick Perry to hear out Merrill's proposal and he too was persuaded and promised action on it.

Because the project was so audacious and massive in its scale, it took a while for the public to digest Merrill's plan. I remember one environmental activist early on telling me that Merrill was a "crazy old man." Several years were lost in a sort of silly academic tussle between Texas A&M and Rice University over competing designs. But eventually the concept of Merrill's coastal barrier was recognized as the only realistic strategy to protect Texas coastal cities, and Houston in particular, from the killer hurricane that will inevitably show up on our shores one day.

Since then, virtually every elected official has voiced their support for a coastal barrier, including our current governor. The U.S. Army Corps of Engineers has conducted a detailed study of the proposal, which was partially funded by the Texas General Land Office.<sup>1</sup> The Corps has put the estimated costs at \$31 billion. While that may seem like a huge number, and it is, it is just a small fraction of the damage a major hurricane, making landfall just the west of Galveston, would do in the Houston area.

But now a decade down the road, precious little, other than the study has been done. In an interesting and revealing aside, President Trump in a Dallas meeting a few months ago, mentioned that Governor Abbott had asked him for \$30 billion to build the Ike Dike. Trump was vague in his response, seemingly not really sold on the idea.

Hurricane Laura was the latest near miss that should be a wake-up call for all of us. A major hurricane making landfall in the San Luis-Freeport area, which was a 40% chance at one point during Laura's track, is an existential threat to our region. Thousands would die, damages would run many billions and, as my friend Terry O'Rourke outlined in a recent Texas Monthly article, it would cause the greatest environmental disaster in history. If you want to get some idea of the destructive power of storm surge CNN has posted some great "before and after" images on this website showing the devastation from Laura. Such a storm would permanently alter Houston's future, much like the 1900 Storm did Galveston's.

Until the federal government makes a large commitment to fund such a project, it is going nowhere. Every candidate for federal office that represents the Houston region should be pressed on their support for funding a coastal barrier. Every incumbent officer holder should be questioned on what they have done to secure funding for the project. And any candidate that does not enthusiastically support moving forward as soon as possible does not deserve your vote.

There have several revisions to the original plan including a redesign of the Bolivar Roads gate structure that allow for greater water exchange between the Galveston Bay and the Gulf and another that would move the barrier from the centerline highways on Bolivar Peninsula and the west end of Galveston Island to a dune structure on the ocean side of each. There will undoubtedly be further refinement as the process moves forward.



★

STATE CAPITAL HIGHLIGHTS

By Chris Cobler



## Remember the Alamo

Operators of the Alamo are looking for the public's support to preserve Texas' historical landmark.

Texans are being urged to contact their lawmakers on behalf of the Alamo Plan, which would preserve the Alamo Church and Long Barrack, reclaim the historic battlefield, relocate the Cenotaph and build a new visitor center and museum.

The renovations are projected to cost \$450 million and are being supported by the city of San Antonio and the nonprofit Alamo Trust, which is overseen by the Texas General Land Office.

As part of the plan, Alamo officials are seeking a permit from the Texas Historical Commission to allow for disassembly, repair and reassembly of the Cenotaph 500 feet from its existing location. The commission meeting is tentatively scheduled for Sept. 22, but details are not yet confirmed.

Some politicians and others have opposed the renovation plan and, in particular, the relocation of the Cenotaph, a 60-foot-tall monument added to the site in the 1930s.

"The Alamo walls need your support if they are to continue to stand," the Alamo officials wrote last week in an email to supporters directing them to supportthealamoplan.com. "Write a letter and tell our Texas officials to act now to support the only plan that will make sure that future generations of Texans will Remember the Alamo!"



### Pumped up in Fort Worth

Convenience store retailer Yesway is planning a new way that will move its headquarters to Fort Worth.

Yesway, which bought Allsup's 304 stores last year, is closing its three offices in Abilene, Texas; Des Moines, Iowa; and Clovis, N.M., to consolidate its operations in Fort Worth.

Yesway has 407 stores in Texas, Iowa, New Mexico, Oklahoma, Kansas, Missouri, Nebraska, South Dakota and Wyoming. The company said it plans to grow to more than 600 convenience stores during the next several years.

### The long and meandering boundary

Texans are known for their fanciful language, but this can lead to confusion when it comes to divvying up water rights.

Charles Perry, chairman of the Senate Committee on Water and Rural Affairs, is seeking clarity from the Office of Attorney General about what

"meanders" meant to lawmakers in 1951.

The Legislature created the High Plains Underground Water Conservation District with a boundary "along the meanders of the caprock" of the High Plains Escarpment, which describes the geographical transition point between the flat ground and the surrounding rolling terrain.

The meandering definition has led to a dispute between the High Plains water district in Potter County and the neighboring Panhandle Groundwater Conservation District, according to Perry, a Republican who represents Senate District 28 in West Texas.

Presumably, an AG decision can mend the fissure.

Chris Cobler is a board member and past president of the Freedom of Information Foundation of Texas. He welcomes email at ccobler@texaspress.com.



### MOMENTS IN TIME The History Channel—

On Sept. 17, 1787, the Constitution of the United States is signed by 38 of 41 delegates present at the Constitutional Convention in Philadelphia. It would not become binding until it was ratified by nine of the 13 states. Nine months later, New Hampshire became the ninth state to ratify the document.\*

On Sept. 18, 1793, George Washington lays the cornerstone to the United States Capitol building. It would take nearly a century to complete, as architects came and went, the British set fire to it and it was called into use during the Civil War.\*

On Sept. 16, 1893, the largest land run in history begins with more than 100,000 people pouring into the Cherokee Strip of Oklahoma to claim valuable land. Towns like Norman and Oklahoma City sprung up almost overnight.\*

On Sept. 14, 1814, Francis Scott Key pens a poem that is later set to music and in 1931 becomes America's national anthem, "The Star-Spangled Banner." The poem was written after Key witnessed Fort McHenry being bombarded by the British during the War of 1812.\*

★

THE POSTSCRIPT

By Carrie Classon

## The Bear

The two women told me about the bear when I was on my hike.

They were on trail bikes and saw the bear in the direction I was headed. "It was scary!" one of the women said.

We were all a little nervous. There had been a bear attack just a few weeks earlier up on the ski hill. A couple had gone up to see the comet. They didn't bring food. There were no bear cubs. There was no reason to think they were in any danger. They were just sitting and watching the sky when a bear attacked, seriously injuring the woman.

Their dog ran away, and folks assumed she would not make it through the night. Miraculously, the dog was found by some hikers the next morning, still trailing her leash. The woman was still recovering, and it was expected she would be for a full year.

This was on our minds, even though we were nowhere near where it had happened. We talked about how terrible things can happen, out of the blue, when no one is at fault.

"It's scary to know something like that could happen!" the biker said.

I agreed, but asked her, "What are the options?"

If I'm going swimming in the ocean, I will research to see if there have been any sharks in the area. But if no one has been bothered in 100 years, I figure I'm not likely to be the first.

"It's like getting hit by lightning," I added. "We know it can happen, but we also know it is a small chance. I can't remove all risk. I can just be smart, research the dangers, and live my life as safely as I can."

The two women agreed. They were going to keep riding their bikes. But they were also going to keep their eyes open. I thanked them and said I would too.

I discovered the limits to my rational approach about thirty minutes later when I came upon a surprisingly large black bear.

First, I saw a deer take off right in front of me. It was scared of something and it wasn't me. I looked up and saw the bear sitting quite close, right on the trail. The bear looked at me.

When I've seen bears before, they immediately run away. It's good to know the bear is as scared of me as I am of it. The bear directly in front of me did not move.

I looked at the bear. The bear looked back at me.

I backed up, slowly, until I was several yards away. Then I made my way up a hill, to the cemetery, so I could do a big detour around the bear. The bear did not move.

"There's a bear on the trail!" I told a man riding a bike, once I got to the cemetery.

"Really?" he said, then fell off his bike.

"Darn these toe clips!" he laughed.

We talked about how food was scarce for bears in the forest. I felt a lot calmer, just talking to someone about the bear. The next day, I was on the trail again.

But if I am going to tell the truth (and I try to) I was a little afraid. Because I do my best to be smart and be careful, and I count on my cleverness to keep me safe. And, of course, I never really am.

It is probably a good thing to remember—no matter how clever or careful I think I am—the bears are always there.

Till next time, Carrie  
Carrie Classon's memoir is called, "Blue Yarn." Learn more at CarrieClasson.com.



★

OBITUARIES

John Douglas Stacey

John Douglas Stacey left his earthly body for everlasting glory on August 13, 2020. As God promises to his faithful servants in Psalms 90:10, "The years of our life are seventy", that was very true in John's case. He was just five days shy of celebrating his 71st birthday when God decided to call him home to be with him and spend eternity. John was born in the rural town of Century, Florida on August 18, 1949, to parents JD Curtis Stacey and Nettie Louise Smith Stacey. He was their ninth child.

John graduated from Ernest Ward High School in '67. After which, he moved to Houston and started working for Champion Paper Mill, for the next 25 years. He then entered the transportation industry doing hot shot work. In 1996, John began his career at Delta Steel, working his way up to Transportation Manager; where he remained employed until his retirement in 2014.

John lived life to it's fullest. He tried many adventurous things in his younger days and was known as a speed demon



around town. He loved driving his Ford's fast. John went on to do other dare-devilish things, like acquiring his pilots license. He flew a model 150 Cessna from '78-'79. Then when the price of fuel went up, he decided he'd had enough and would go enjoy other activities with his family. He enjoyed the water and ocean also, as he lived along the coast his entire life and many trips were taken to Florida to see his family. Like all his other hobbies, he drove his boat fast too and God help you if you went water skiing when he was behind the wheel! He spent numerous hours building projects, from furniture to carports, with his daughter and she was the one who somehow always got hurt. John was an exceptional marksman and he enjoyed going to gun shows and Skeet shoots with his son. He found absolute joy while riding his motorcycle and for many years he volunteered his time escorting the Wreaths Across America trucks to the local veterans cemetery.

Throughout John's life the most important things to him were God and his family. You didn't have to be blood to be family either. He had made family out of many neighbors, his brothers and sisters at New Hope Baptist Church, and the folks at Hungry Jacks, the hometown hangout he visited regularly. Hungry Jacks even named the Christmas morning breakfast gathering, "The John Stacey Christmas Breakfast"! He was known to carry peppermints in his pocket and pass them out to everyone. One thing was certain, he always dressed sharp. He took pride in everything he did and he made sure we all knew he loved us.

John is preceded in death by his parents, his loving wife of almost 25

years, Ginger Lynette Marie Dautat Stacey, and siblings, Mae Dell, Helen, Eloise, Faye, and Curtis "Buck".

Those left to cherish his memory are his son, John Douglas "Doug" Stacey II and wife, Angela; daughter, Peggy Lynn Marie Dautat Knight and husband, Earl; grandchildren, Breanna Thomas and husband, Zach; Tori Rein and husband, Dalton; John-Anthony Knight, Jett Knight, and Justin Knight; great grandchildren, J.D. Thomas, Caroline Rein, Julia Thomas, and Scarlett Rein; brothers, Elvin Stacey, Doyle Stacey and Ronald Stacey; sister, Linda Peacock. Thank you George Conrad, Craig Brodd, and Phil Breckling for the years of friendships you gave to him.

Whatever you called him: John, JD, Jake, Dad, Big John, Pawpaw, Poppa John or Big Paw, he made a lasting impact on all of us and he left us with many great memories to carry us along, until we are once again with him. Just keep the faith and always hold dear John 3:16 and you will surly see him again.

ART GALLERY:

Mei uses recycled wire and CDs to make wire sculptures



The World Around Us Keeps Changing

It's Essential For Us To Adapt Our Businesses For Success Today

2020 has thrown us all some curveballs. One thing we know for certain is that none of us can afford to wait for things to get back to the way they were before. The new business normal is now and there are many ways we are already equipped to handle the changes and grow our business in the new workplace of today.

As you find the solutions needed for your clients, remember DocResources is not only your trusted source for OEM & alternative supplies, but also a variety of other items your customers require. Cleaning products specifically designed for office equipment, data storage, ink & laser MFPs, calculators, shredders, scanners, and more are all available for drop-shipment from DocResources to you or your customers' locations.

1

Disposable MASK

DISPOSABLE MASK

2

HANDSANITIZER8OZ

NEW

3

CLEANINGWIPE300CT

CLEANINGWIPE300CT

4

VINYLPFGLOVEMD

VINYLPFGLOVELG

5

VINYLPFGLOVELG

VINYLPFGLOVELG

6

VINYLPFGLOVELG

VINYLPFGLOVELG

7

VINYLPFGLOVELG

VINYLPFGLOVELG

8

VINYLPFGLOVELG

VINYLPFGLOVELG

9

VINYLPFGLOVELG

VINYLPFGLOVELG

10

VINYLPFGLOVELG

VINYLPFGLOVELG

11

VINYLPFGLOVELG

VINYLPFGLOVELG

12

VINYLPFGLOVELG

VINYLPFGLOVELG

13

VINYLPFGLOVELG

VINYLPFGLOVELG

14

VINYLPFGLOVELG

VINYLPFGLOVELG

15

VINYLPFGLOVELG

VINYLPFGLOVELG

16

VINYLPFGLOVELG

VINYLPFGLOVELG

17

VINYLPFGLOVELG

VINYLPFGLOVELG

18

VINYLPFGLOVELG

VINYLPFGLOVELG

19

VINYLPFGLOVELG

VINYLPFGLOVELG

20

VINYLPFGLOVELG

VINYLPFGLOVELG

21

VINYLPFGLOVELG

VINYLPFGLOVELG

22

VINYLPFGLOVELG

VINYLPFGLOVELG

23

VINYLPFGLOVELG

VINYLPFGLOVELG

24

VINYLPFGLOVELG

VINYLPFGLOVELG

25

VINYLPFGLOVELG

VINYLPFGLOVELG

26

VINYLPFGLOVELG

VINYLPFGLOVELG

27

VINYLPFGLOVELG

VINYLPFGLOVELG

28

VINYLPFGLOVELG

VINYLPFGLOVELG

29

VINYLPFGLOVELG

VINYLPFGLOVELG

30

VINYLPFGLOVELG

VINYLPFGLOVELG

31

VINYLPFGLOVELG

VINYLPFGLOVELG

32

VINYLPFGLOVELG

VINYLPFGLOVELG

33

VINYLPFGLOVELG

VINYLPFGLOVELG

34

VINYLPFGLOVELG

VINYLPFGLOVELG

35

VINYLPFGLOVELG

VINYLPFGLOVELG

36

VINYLPFGLOVELG

VINYLPFGLOVELG

37

VINYLPFGLOVELG

VINYLPFGLOVELG

38

VINYLPFGLOVELG

VINYLPFGLOVELG

39

VINYLPFGLOVELG

VINYLPFGLOVELG

40

VINYLPFGLOVELG

VINYLPFGLOVELG

41

VINYLPFGLOVELG

VINYLPFGLOVELG

42

VINYLPFGLOVELG

VINYLPFGLOVELG

43

VINYLPFGLOVELG

VINYLPFGLOVELG

44

VINYLPFGLOVELG

VINYLPFGLOVELG

45

VINYLPFGLOVELG

VINYLPFGLOVELG

46

VINYLPFGLOVELG

VINYLPFGLOVELG

47

VINYLPFGLOVELG

VINYLPFGLOVELG

48

VINYLPFGLOVELG

VINYLPFGLOVELG

49

VINYLPFGLOVELG

VINYLPFGLOVELG

50

VINYLPFGLOVELG

VINYLPFGLOVELG

51

VINYLPFGLOVELG

VINYLPFGLOVELG

52

VINYLPFGLOVELG

VINYLPFGLOVELG

53

VINYLPFGLOVELG

VINYLPFGLOVELG

54

VINYLPFGLOVELG

VINYLPFGLOVELG

55

VINYLPFGLOVELG

VINYLPFGLOVELG

56

VINYLPFGLOVELG

VINYLPFGLOVELG

57

VINYLPFGLOVELG

VINYLPFGLOVELG

58

VINYLPFGLOVELG

VINYLPFGLOVELG

59

VINYLPFGLOVELG

VINYLPFGLOVELG

60

VINYLPFGLOVELG

VINYLPFGLOVELG

61

VINYLPFGLOVELG

VINYLPFGLOVELG

62

VINYLPFGLOVELG

VINYLPFGLOVELG

63

VINYLPFGLOVELG

VINYLPFGLOVELG

64

VINYLPFGLOVELG

VINYLPFGLOVELG

65

VINYLPFGLOVELG

VINYLPFGLOVELG

66

VINYLPFGLOVELG

VINYLPFGLOVELG

67

VINYLPFGLOVELG

VINYLPFGLOVELG

68

VINYLPFGLOVELG

VINYLPFGLOVELG

69

VINYLPFGLOVELG

VINYLPFGLOVELG

70

VINYLPFGLOVELG

VINYLPFGLOVELG

71

VINYLPFGLOVELG

VINYLPFGLOVELG

72

VINYLPFGLOVELG

VINYLPFGLOVELG

73

VINYLPFGLOVELG

VINYLPFGLOVELG

74

VINYLPFGLOVELG

VINYLPFGLOVELG

75

VINYLPFGLOVELG

VINYLPFGLOVELG

76

VINYLPFGLOVELG

VINYLPFGLOVELG

77

VINYLPFGLOVELG

VINYLPFGLOVELG

78

VINYLPFGLOVELG

VINYLPFGLOVELG

79

VINYLPFGLOVELG

VINYLPFGLOVELG

80

VINYLPFGLOVELG

VINYLPFGLOVELG

81

VINYLPFGLOVELG

VINYLPFGLOVELG

82

VINYLPFGLOVELG

VINYLPFGLOVELG

83

VINYLPFGLOVELG

VINYLPFGLOVELG

84

VINYLPFGLOVELG

VINYLPFGLOVELG

85

VINYLPFGLOVELG

VINYLPFGLOVELG

86

VINYLPFGLOVELG

VINYLPFGLOVELG

87

VINYLPFGLOVELG

VINYLPFGLOVELG

88

VINYLPFGLOVELG

VINYLPFGLOVELG

89

VINYLPFGLOVELG

VINYLPFGLOVELG

90

VINYLPFGLOVELG

VINYLPFGLOVELG

91

VINYLPFGLOVELG

VINYLPFGLOVELG

92

VINYLPFGLOVELG

VINYLPFGLOVELG

93

VINYLPFGLOVELG

VINYLPFGLOVELG

94

VINYLPFGLOVELG

VINYLPFGLOVELG

95

VINYLPFGLOVELG

VINYLPFGLOVELG

96

VINYLPFGLOVELG

VINYLPFGLOVELG

97

VINYLPFGLOVELG

VINYLPFGLOVELG

98

VINYLPFGLOVELG

VINYLPFGLOVELG

99

VINYLPFGLOVELG

VINYLPFGLOVELG

100

VINYLPFGLOVELG

VINYLPFGLOVELG

101

VINYLPFGLOVELG

VINYLPFGLOVELG

102

VINYLPFGLOVELG

VINYLPFGLOVELG

103

VINYLPFGLOVELG

VINYLPFGLOVELG

104

VINYLPFGLOVELG

VINYLPFGLOVELG

105

VINYLPFGLOVELG

VINYLPFGLOVELG

106

VINYLPFGLOVELG

VINYLPFGLOVELG

107

VINYLPFGLOVELG

VINYLPFGLOVELG

108

VINYLPFGLOVELG

VINYLPFGLOVELG

109

VINYLPFGLOVELG

VINYLPFGLOVELG

110

VINYLPFGLOVELG

VINYLPFGLOVELG

111

VINYLPFGLOVELG

VINYLPFGLOVELG

112

VINYLPFGLOVELG

VINYLPFGLOVELG

113

VINYLPFGLOVELG

VINYLPFGLOVELG

114

VINYLPFGLOVELG

VINYLPFGLOVELG

115

VINYLPFGLOVELG

VINYLPFGLOVELG

116

VINYLPFGLOVELG

VINYLPFGLOVELG

117

VINYLPFGLOVELG

VINYLPFGLOVELG

118

VINYLPFGLOVELG

VINYLPFGLOVELG

119

VINYLPFGLOVELG

VINYLPFGLOVELG

120

VINYLPFGLOVELG

VINYLPFGLOVELG

121

VINYLPFGLOVELG

VINYLPFGLOVELG

122

VINYLPFGLOVELG

VINYLPFGLOVELG

123

VINYLPFGLOVELG

VINYLPFGLOVELG

124

VINYLPFGLOVELG

VINYLPFGLOVELG

125

VINYLPFGLOVELG

VINYLPFGLOVELG

126

VINYLPFGLOVELG

VINYLPFGLOVELG

127

VINYLPFGLOVELG

VINYLPFGLOVELG

128

VINYLPFGLOVELG

VINYLPFGLOVELG

129

VINYLPFGLOVELG

VINYLPFGLOVELG

130

VINYLPFGLOVELG

VINYLPFGLOVELG

131

VINYLPFGLOVELG

VINYLPFGLOVELG

132

VINYLPFGLOVELG

VINYLPFGLOVELG

133

VINYLPFGLOVELG

VINYLPFGLOVELG

134

VINYLPFGLOVELG

VINYLPFGLOVELG

135

VINYLPFGLOVELG

VINYLPFGLOVELG

136

VINYLPFGLOVELG

VINYLPFGLOVELG

137

VINYLPFGLOVELG

VINYLPFGLOVELG

138

VINYLPFGLOVELG

VINYLPFGLOVELG

139

VINYLPFGLOVELG

VINYLPFGLOVELG

140

VINYLPFGLOVELG

VINYLPFGLOVELG

141

VINYLPFGLOVELG

VINYLPFGLOVELG

142

VINYLPFGLOVELG

VINYLPFGLOVELG

143

VINYLPFGLOVELG

VINYLPFGLOVELG

144

VINYLPFGLOVELG

VINYLPFGLOVELG

145

VINYLPFGLOVELG

VINYLPFGLOVELG

146

VINYLPFGLOVELG

VINYLPFGLOVELG

147

VINYLPFGLOVELG

VINYLPFGLOVELG

148

VINYLPFGLOVELG

VINYLPFGLOVELG

149

VINYLPFGLOVELG

VINYLPFGLOVELG

150

VINYLPFGLOVELG

VINYLPFGLOVELG

151

VINYLPFGLOVELG

VINYLPFGLOVELG

152

VINYLPFGLOVELG

VINYLPFGLOVELG

153

VINYLPFGLOVELG

VINYLPFGLOVELG

154

VINYLPFGLOVELG

VINYLPFGLOVELG

155

VINYLPFGLOVELG

VINYLPFGLOVELG

156

VINYLPFGLOVELG

VINYLPFGLOVELG

157

VINYLPFGLOVELG

VINYLPFGLOVELG

158

VINYLPFGLOVELG

VINYLPFGLOVELG

159

VINYLPFGLOVELG

VINYLPFGLOVELG

160

VINYLPFGLOVELG

VINYLPFGLOVELG

161

VINYLPFGLOVELG

VINYLPFGLOVELG

162

VINYLPFGLOVELG

VINYLPFGLOVELG

163

VINYLPFGLOVELG

VINYLPFGLOVELG

164

VINYLPFGLOVELG

VINYLPFGLOVELG

165

VINYLPFGLOVELG

VINYLPFGLOVELG

166

VINYLPFGLOVELG

VINYLPFGLOVELG

167

VINYLPFGLOVELG

VINYLPFGLOVELG

168

VINYLPFGLOVELG

VINYLPFGLOVELG

169

VINYLPFGLOVELG

VINYLPFGLOVELG

170

VINYLPFGLOVELG

VINYLPFGLOVELG

171

VINYLPFGLOVELG

VINYLPFGLOVELG

172

VINYLPFGLOVELG

VINYLPFGLOVELG

173

VINYLPFGLOVELG

VINYLPFGLOVELG

174

VINYLPFGLOVELG

VINYLPFGLOVELG

175

VINYLPFGLOVELG

VINYLPFGLOVELG

176

VINYLPFGLOVELG

VINYLPFGLOVELG

177

VINYLPFGLOVELG

VINYLPFGLOVELG

178

VINYLPFGLOVELG

VINYLPFGLOVELG

179

VINYLPFGLOVELG

VINYLPFGLOVELG

180

VINYLPFGLOVELG

VINYLPFGLOVELG

181

VINYLPFGLOVELG

VINYLPFGLOVELG

182

VINYLPFGLOVELG

VINYLPFGLOVELG

183

VINYLPFGLOVELG

VINYLPFGLOVELG

184

VINYLPFGLOVELG

VINYLPFGLOVELG

185

VINYLPFGLOVELG

VINYLPFGLOVELG

186

VINYLPFGLOVELG

VINYLPFGLOVELG

187

VINYLPFGLOVELG

VINYLPFGLOVELG

188

VINYLPFGLOVELG

VINYLPFGLOVELG

189

VINYLPFGLOVELG

VINYLPFGLOVELG

190

VINYLPFGLOVELG

VINYLPFGLOVELG

191

VINYLPFGLOVELG

VINYLPFGLOVELG

192

VINYLPFGLOVELG

VINYLPFGLOVELG

193

VINYLPFGLOVELG

VINYLPFGLOVELG

194

VINYLPFGLOVELG

VINYLPFGLOVELG

195

VINYLPFGLOVELG

VINYLPFGLOVELG

196

VINYLPFGLOVELG

VINYLPFGLOVELG

197

VINYLPFGLOVELG

VINYLPFGLOVELG

198

VINYLPFGLOVELG

VINYLPFGLOVELG

199

VINYLPFGLOVELG

VINYLPFGLOVELG

200

VINYLPFGLOVELG

VINYLPFGLOVELG

201

VINYLPFGLOVELG

VINYLPFGLOVELG

202

VINYLPFGLOVELG

VINYLPFGLOVELG

203

VINYLPFGLOVELG

VINYLPFGLOVELG

204

VINYLPFGLOVELG

VINYLPFGLOVELG

205

VINYLPFGLOVELG

VINYLPFGLOVELG

206

VINYLPFGLOVELG

VINYLPFGLOVELG

207

VINYLPFGLOVELG

VINYLPFGLOVELG

208

VINYLPFGLOVELG

VINYLPFGLOVELG

209

VINYLPFGLOVELG

VINYLPFGLOVELG

210

VINYLPFGLOVELG

VINYLPFGLOVELG

211

VINYLPFGLOVELG

VINYLPFGLOVELG

212

VINYLPFGLOVELG

VINYLPFGLOVELG

213

VINYLPFGLOVELG

VINYLPFGLOVELG

214

VINYLPFGLOVELG

VINYLPFGLOVELG

215

VINYLPFGLOVELG

VINYLPFGLOVELG

216

VINYLPFGLOVELG

VINYLPFGLOVELG

217

VINYLPFGLOVELG

VINYLPFGLOVELG

218

VINYLPFGLOVELG

VINYLPFGLOVELG

219

VINYLPFGLOVELG

VINYLPFGLOVELG

220

VINYLPFGLOVELG

VINYLPFGLOVELG

221

VINYLPFGLOVELG

VINYLPFGLOVELG

222

VINYLPFGLOVELG

VINYLPFGLOVELG

223

VINYLPFGLOVELG

VINYLPFGLOVELG

224

VINYLPFGLOVELG

VINYLPFGLOVELG

225

VINYLPFGLOVELG

VINYLPFGLOVELG

226

VINYLPFGLOVELG

VINYLPFGLOVELG

227

VINYLPFGLOVELG

VINYLPFGLOVELG

228

VINYLPFGLOVELG

VINYLPFGLOVELG

229

VINYLPFGLOVELG

VINYLPFGLOVELG

230

VINYLPFGLOVELG

VINYLPFGLOVELG

231

VINYLPFGLOVELG

VINYLPFGLOVELG

232

VINYLPFGLOVELG

VINYLPFGLOVELG

233

VINYLPFGLOVELG

VINYLPFGLOVELG

234

VINYLPFGLOVELG

VINYLPFGLOVELG

235

VINYLPFGLOVELG

VINYLPFGLOVELG

236

VINYLPFGLOVELG

VINYLPFGLOVELG

237

VINYLPFGLOVELG

VINYLPFGLOVELG

238

VINYLPFGLOVELG

VINYLPFGLOVELG

239

VINYLPFGLOVELG

VINYLPFGLOVELG

240

VINYLPFGLOVELG

VINYLPFGLOVELG

241

VINYLPFGLOVELG

VINYLPFGLOVELG

242

VINYLPFGLOVELG

VINYLPFGLOVELG

243

VINYLPFGLOVELG

VINYLPFGLOVELG

244

VINYLPFGLOVELG

VINYLPFGLOVELG

245

VINYLPFGLOVELG

VINYLPFGLOVELG

246

VINYLPFGLOVELG

VINYLPFGLOVELG

247

VINYLPFGLOVELG

VINYLPFGLOVELG

248

VINYLPFGLOVELG

VINYLPFGLOVELG

249

VINYLPFGLOVELG

VINYLPFGLOVELG

250

VINYLPFGLOVELG

VINYLPFGLOVELG

251

VINYLPFGLOVELG

VINYLPFGLOVELG

252

VINYLPFGLOVELG

VINYLPFGLOVELG

253

VINYLPFGLOVELG

VINYLPFGLOVELG

254

VINYLPFGLOVELG

VINYLPFGLOVELG

255

VINYLPFGLOVELG

VINYLPFGLOVELG

256

VINYLPFGLOVELG

VINYLPFGLOVELG

257

VINYLPFGLOVELG

VINYLPFGLOVELG

258

VINYLPFGLOVELG

VINYLPFGLOVELG

259

VINYLPFGLOVELG

VINYLPFGLOVELG

260

VINYLPFGLOVELG

VINYLPFGLOVELG

261

VINYLPFGLOVELG

VINYLPFGLOVELG

262

VINYLPFGLOVELG

VINYLPFGLOVELG

263

VINYLPFGLOVELG

VINYLPFGLOVELG

264

VINYLPFGLOVELG

VINYLPFGLOVELG

265

VINYLPFGLOVELG

VINYLPFGLOVELG

266

VINYLPFGLOVELG

VINYLPFGLOVELG

267

VINYLPFGLOVELG

VINYLPFGLOVELG

268

VINYLPFGLOVELG

VINYLPFGLOVELG

269

VINYLPFGLOVELG

VINYLPFGLOVELG

270

VINYLPFGLOVELG

VINYLPFGLOVELG

271

VINYLPFGLOVELG

VINYLPFGLOVELG

272

VINYLPFGLOVELG

VINYLPFGLOVELG

273

VINYLPFGLOVELG

VINYLPFGLOVELG

274

VINYLPFGLOVELG

VINYLPFGLOVELG

275

VINYLPFGLOVELG

VINYLPFGLOVELG

276

VINYLPFGLOVELG

VINYLPFGLOVELG

277

VINYLPFGLOVELG

VINYLPFGLOVELG

278

VINYLPFGLOVELG

VINYLPFGLOVELG

279

VINYLPFGLOVELG

VINYLPFGLOVELG

280

VINYLPFGLOVELG

VINYLPFGLOVELG

281

VINYLPFGLOVELG

VINYLPFGLOVELG

282

VINYLPFGLOVELG

VINYLPFGLOVELG

283

VINYLPFGLOVELG

VINYLPFGLOVELG

284

VINYLPFGLOVELG

VINYLPFGLOVELG

285

VINYLPFGLOVELG

VINYLPFGLOVELG

286

VINYLPFGLOVELG

VINYLPFGLOVELG

287

VINYLPFGLOVELG

VINYLPFGLOVELG

288

VINYLPFGLOVELG

VINYLPFGLOVELG

289

VINYLPFGLOVELG

VINYLPFGLOVELG

290

VINYLPFGLOVELG

VINYLPFGLOVELG

291

VINYLPFGLOVELG

VINYLPFGLOVELG

292

VINYLPFGLOVELG

VINYLPFGLOVELG

293

VINYLPFGLOVELG

VINYLPFGLOVELG

294

VINYLPFGLOVELG

VINYLPFGLOVELG

295

VINYLPFGLOVELG

VINYLPFGLOVELG

296

VINYLPFGLOVELG

VINYLPFGLOVELG

297

VINYLPFGLOVELG

VINYLPFGLOVELG

298

VINYLPFGLOVELG

VINYLPFGLOVELG

299

VINYLPFGLOVELG

VINYLPFGLOVELG

300

VINYLPFGLOVELG

VINYLPFGLOVELG

301

VINYLPFGLOVELG

VINYLPFGLOVELG

302

VINYLPFGLOVELG

VINYLPFGLOVELG

303

VINYLPFGLOVELG

VINYLPFGLOVELG

304

VINYLPFGLOVELG

VINYLPFGLOVELG

305

VINYLPFGLOVELG

VINYLPFGLOVELG

306

VINYLPFGLOVELG

VINYLPFGLOVELG

307

VINYLPFGLOVELG

VINYLPFGLOVELG

308

VINYLPFGLOVELG

VINYLPFGLOVELG

309

VINYLPFGLOVELG

VINYLPFGLOVELG

310

VINYLPFGLOVELG

VINYLPFGLOVELG

311

VINYLPFGLOVELG

VINYLPFGLOVELG

312

VINYLPFGLOVELG

VINYLPFGLOVELG

313

VINYLPFGLOVELG

VINYLPFGLOVELG

314

VINYLPFGLOVELG

VINYLPFGLOVELG

315

VINYLPFGLOVELG

VINYLPFGLOVELG

316

VINYLPFGLO



ASK THE EXPERT

ASK DIAMOND JIM

Diamond Jim: “Should I have my jewelry cleaned and inspected?”

Jewelry repair is not expensive, but neglect is!

As a jewelry professional, I'm often asked about cleaning, inspecting and repairing jewelry. Here's some really good news...we will gladly clean your jewelry and inspect it at no charge. In the event your jewelry does need some minor repair work, it's usually not expensive at all. In fact, having an annual inspection of your jewelry could save you hundreds if

to restoration of your family heirlooms. The difference with a laser repair is that the heat is highly focused making the weld extremely strong. With a laser we can repair almost any metal, even the new titanium eyeglasses. Often we can safely repair a damaged item without removing the gemstone. We offer this new laser technology to ensure we can provide the best care for your jewelry. Let us inspect your jewelry before any stone loss or further damage. We provide a 1



Bring in your jewelry for a free cleaning and a free no-obligation inspection by our repair expert, Mr. Gary. It's like Diamond Jim and Gary often say..."Jewelry repair is not expensive, but neglect is"! Trust the care of your jewelry to the repair experts at Pineforest Jewelry.

not thousands of dollars later. Neglecting what is now a small needed repair will most likely become a large repair job later, especially if you lose a stone in your ring or your necklace breaks and you lose the pendant all together.

Pineforest Jewelry invites you to come in and let our expert staff clean and inspect your jewelry at no charge. We have two custom design and professional craftsmen available 5 days a week (Tuesday thru Saturday). Together, our jewelry repair shop experts have a combined expertise of more than 65 years in the jewelry industry. Our state-of-the-art shop does both micro-soldering & laser fusing on everything from ring sizing and prong repair

year warranty on any repairs we perform.

Thank you for reading the "Ask Diamond Jim" column and for supporting the North Channel Star Newspaper!

Diamond Jim is a diamond dealer and precious metals broker of NTR Metals. See more at: [www.pineforestjewelry.com](http://www.pineforestjewelry.com).

If you have questions pertaining to jewelry, watches, diamonds, precious stones, precious metals, and other questions related to the jewelry industry, email [jmills@pineforestjewelry.com](mailto:jmills@pineforestjewelry.com).

Phony COVID Test Site,

CONTINUED FROM PAGE 1

ble Sherman Eagleton's office in Baytown. This was the first such incidence Constable Eagleton had seen in this area. "During these difficult times it is a shame that anyone could think of preying on innocent, scared and potentially ill citizens," said Constable Sherman Eagleton.

"We want everyone to be mindful of the signs of a fraudulent "pop-up" COVID testing site such as, "staff" asking for payment or social security numbers," Eagleton said. "Before getting tested, verify the testing site by checking it on [www.ReadyHarris.org](http://www.ReadyHarris.org) or get a referral from your trusted medical provider. Being properly tested by a trusted source is key to stopping this virus. If you think you've spotted a site that isn't legitimate, report it immediately. Call our 24-Hour Dispatch at 713-274-2500 or report it anonymously on our Tipline 832-927-8477. Stay safe, stay well, stop the spread!"

The FBI is investigating fake test sites in Louisville, Kentucky, an official said Thursday. And in Birmingham, AL, U.S. Attorney Jay Town issued a warning about bogus, fly-by-night testing sites. In a story in AARP, David James, president of the Metro Louisville Council, said he went to another site at a gas sta-

tion and saw a sign on the street with two red crosses mimicking the American Red Cross logo. There, staffers wearing personal protective equipment wore neck lanyards that misspelled the health care law known as HIPAA, which is the Health Insurance Portability and Accountability Act.

Other reports about such sketchy sites have emerged in Arizona, Florida, Georgia, New York and Washington state, government and nonprofit officials shared with AARP.

If residents notice a site that seems unusual or where strict safety protocols are not followed, they should report fraudulent activities both to local authorities and: <https://www.texasattorneygeneral.gov/consumer-protection/covid-19-consumer-issues> or <https://www.justice.gov/usao-ndtx/report-covid-19-fraud>. All valid County testing sites are listed at [www.hcphtx.org](http://www.hcphtx.org) or [readyharris.org](http://readyharris.org).

"We certainly don't want to discourage people from being tested, and all of our testing sites are free," said Martha Marquez, Harris County Public Health Public Information Officer on Sunday. "We do not charge for testing through Harris County, but a short survey is required."

Ike Dike,

CONTINUED FROM PAGE 1

comment starting in late October and in final form by next spring.

The forecast for the massive project is a lot farther off than the next hurricane during an active season. Congressional approval and matching local funds are still needed.

A&M officials say the investment is well worth it to protect about 6 million people and prevent \$100 billion in damages from a direct hit.

"The Ike Dike would work, I am sure of it," Merrell said in a news release. "If you stop the storm surge at the coast, you pro-

tect everyone – Galveston, Houston, everybody.

"Obviously this is a very busy and probably record-breaking season – I believe it's the fifth above-average season in a row. There are theories that suggest that in the future, we might get more major hurricanes and that there are now many more intense rainfall events. Also, there is evidence that many storms are slowing down as they approach the coast – more flooding and longer duration surges. The flooding threat is getting worse and worse."

CHARLOTTE'S WEB



Love Carefully

I know we have all heard the saying "What does not kill you will make you stronger." Those words are true, yet too often those experiences that make you stronger are painful not only emotionally, physically and financially but leave you with a broken heart.

This week alone, I have spoken with three young women who share the pain of broken relationships and entirely too much abuse. During the wake of COVID-19, the first young woman had to postpone her well-planned Hawaiian wedding. She and her fiancée had been planning the destination wedding in Hawaii and over 200 friends and family were scheduled to attend. As the pandemic began to spread, they decided it would be best to postpone the event and perhaps by then her stepson would also be able to fly to Hawaii for the occasion. Unfortunately, they were living in Lake Charles last week when they lost 80% of their material possessions. When there is tension and trauma such as Hurricane Laura, the worst seems to come out in some people. After several days of her fiancée experiencing severe loss, he began to get physical with her. Early Monday, she and her eight-year-old son began the journey to Seattle to establish new roots.

The next young lady I spoke with has been attempting to hold down the fort while her spouse has been serving time in prison. Before he left, their relationship was shaky to say the least, but like some many others

who grew up in the whirlwinds of divorced parents, she was determined to make her marriage work. No matter how many times he struck her, cheated on her, or stole from her family, she was determined to stand by his side. The past three years have been rough with car issues, homelessness, and typical childhood illnesses for her five and seven-year-old children as well as unemployment. She has not had the support of parents or even grandparents. Her only sibling is younger and equally challenged from all they endured as children. Now that her husband is due to be released from prison, he has also filed for divorce and threatened to disappear with the children and his new girlfriend.

This week marked the two year anniversary of a young mother learning that while she was at work, her live-in boyfriend, not the father of her 10 month old baby, had shaken the infant so intensely that the baby was left severely disabled and blind. As she has struggled to get the assistance her child deserved, the accused is out on bond and hopefully will get to trial by April.

I share all of this to remind you that we need to understand that relationships are a luxury, not a necessity. We need to know and model to those around us that life is too short to settle for what you might think is love. Take the time to get to know God, to get to know yourself and then date. You deserve to be loved and respected unconditionally.

You found her later in life



But you found her.

[PineforestJewelry.com](http://PineforestJewelry.com)  
1141 Uvalde • Houston, Texas 77015  
713.451.1321

NORTH CHANNEL★STAR

5906 STAR LANE, HOUSTON, TX 77057  
713-266-3444 • FAX (713) 977-1188  
email: [northchannelstar@gmail.com](mailto:northchannelstar@gmail.com)  
website: [www.northchannelstar.com](http://www.northchannelstar.com)

Gilbert Hoffman.....Editor & Publisher  
McI-Ing Hoffman.....Associate Publisher  
Julieta Paita.....Assistant Editor  
Willie Glasgow.....Marketing Director  
Lewis Spearman.....Advertising Director  
Luis Hernandez.....Production Director  
Gerardo Hernandez.....Circulation/Mail Director

Published each Wednesday by GrafikPress Corp. Any erroneous statement which may appear will be corrected when brought to the attention of the publisher. Liability for errors is limited to the reprinting of the corrected version. Submissions are encouraged, in person, by mail, by Fax, or by email, to: [northchannelstar@gmail.com](mailto:northchannelstar@gmail.com)

Member North Channel Chamber of Commerce  
Member Texas Press Association

[www.facebook.com/NorthChannelStar](http://www.facebook.com/NorthChannelStar)

WIN FREE TICKETS to



Send us a Photo of You, reading the NORTH CHANNEL STAR.

(Be sure the front page shows.)

We are holding a drawing for 3 FREE TICKETS to the TEXAS RENAISSANCE FESTIVAL



Your desired Date (CIRCLE ONE):

Oct. 3, 4, 10, 11, 17, 18, Nov. 7, 8, 21, 22

Submit this information to enter the drawing:

Name \_\_\_\_\_

Address \_\_\_\_\_

City \_\_\_\_\_ Zip \_\_\_\_\_

Home Phone \_\_\_\_\_

Cell Phone \_\_\_\_\_

Submit by email with photo to [northchannelstar@gmail.com](mailto:northchannelstar@gmail.com)

SUBMITTED PHOTOS MAY BE PUBLISHED. ONE ENTRY PER HOUSEHOLD. MULTIPLE ENTRIES WILL DISQUALIFY ALL OF THEM.

NORTH CHANNEL BUSINESS DIRECTORY



EILEEN BRIGHTWELL, DDS  
[www.brightwelldental.com](http://www.brightwelldental.com)

1820 Holland St. • Jacinto City, TX 77029  
(713) 455-7923

Free Estimates

Financing Available

**MR. ROOFER**  
Siding & Contracting LLC  
281-452-0000

New Roofs • Repairs • Painting • Hardi Plank Siding  
• Mobile Home Skirting

P.O. Box 914, Channelview, TX 77530  
[Mrrroofer@mail.com](mailto:Mrrroofer@mail.com)  
= Major credit cards accepted =

Call 713-266-3444 to Advertise  
YOUR Business in this Directory.  
5,000 readers Weekly



# CLASSIFIED ADS

## Call 713-266-3444

Your AD will reach up to 120,000 readers in our FIVE newspapers, with a combined circulation of 40,000 copies. Get ACTION on your AD. Rates start at only \$16 for 20 words. A bargain!

### FOR RENT

Newly renovated, 4 Bd 2 Ba home, tile floors, granite counters, fenced yard, patio & storage shed, 14910 Scotter Ln; Channelview. \$1650/mo + dep.

### FOR RENT

### SERVICES

#### PARTS SERVICES

R.F. Hull Water Well - Pump Service. 281-442-5630.

### SERVICES

#### PRINTING & MAILING

Full Service Marketing Services. 713-977-2555

### CEMETERY PLOTS

#### 9 PLOTS

available @ Sterling White Cemetery Prime Location. \$1,000 each, 2 for \$1,500 + transfer. Call 281-380-6735.

#### A/C & APPLIANCE REPAIR

All Major Brands. In-Home Service, 20 yrs. experience. Repair electro-domestics, todo tipo de modelos. Call Mario, 713-291-8286.

#### APPLIANCES WANTED

CASH FOR old broken washers. Call 713-781-6071.

SMALL ADS Bring BIG RESULTS Classified ADS 713-266-3444

### LEGAL NOTICE

#### NOTICE TO CREDITORS

Notice is hereby given that Original Letters Testamentary for Docket No. 485591; Estate of ALBERT FRANCIS LYNCH Deceased; In Probate Court No. 1 of Harris County, Texas, Deceased, were issued on August, 19, 2020.

#### KELLY LYNCH

The residence address of the administrator is in Harris County, Texas. The mailing address is:

c/o Weston Cotten 1500 Wallisville Rd Highlands, TX 77562

All persons having claims against this Estate which is currently being administered are required to present them within the time and in the manner prescribed by law. Dated this SEPTEMBER 1, 2020

by WESTON COTTEN Attorney for the Estate

### LEGAL NOTICE

### LEGAL NOTICE

### LEGAL NOTICE

### LEGAL NOTICE

Harris County ESD No. 50 is selling a 2006 Ferrara Intruder II Pumper from the Channelview Fire Department's fleet through sealed bid process with a minimum starting bid of \$50,000. ESD 50 will be accepting sealed bid from September 4<sup>th</sup> until 5pm CST on September 18<sup>th</sup>. The bids will be opened at a public meeting on September 21, 2020 at 6pm at the Channelview Fire Department located at 1210 Dell Dale, Channelview, TX 77530. The bidding process is being hosted by Brindlee Mountain Fire Apparatus. Further details are available at <https://www.firetruckmall.com/AvailableTruck/13663/2006-Ferrara-Intruder-II-Pumper> or by calling 256-776-7786. Bids may be hand delivered or mailed to: Channelview Fire Department ATTN: Truck Bid 1210 Dell Dale Channelview, TX 77530

### HELP WANTED

### HELP WANTED

#### NEWSPAPER MANAGING EDITOR/PUBLISHER

Position available for journalist or manager with local newspaper. Experienced in writing, interviewing, sourcing, computer layout, ad sales, record keeping, promotions. Salary plus benefits. Send letter of interest to GRAFIKSTAR@aol.com

LEGAL NOTICES APPEAR IN THE HIGHLANDS STAR CROSBY COURIER, AND THE NORTH CHANNEL STAR. CALL 713-266-3444

**Blazing Fast Internet!**  
ADD TO YOUR PACKAGE FOR ONLY \$19.99/mo. where available

**BRING EVERYTHING YOU LOVE TOGETHER!**

DISH is ranked #1 in Customer Satisfaction by JD Power and our customers for a second year in a row!

**2-YEAR TV PRICE GUARANTEE** | **\$59.99/mo.** | **190 CHANNELS** Including Local Channels! for 12 mos.

\*All offers require credit qualification. 24 month commitment with early termination fee and standard fees. Prices include Hopper Duo for qualifying customers. Hopper Duo requires 24-month commitment. Hopper Duo is not available in all areas. See website for details.

**FREE VOICE REMOTE**  
with Google Assistant

**FREE SMART HD DVR INCLUDED**

**FREE STREAMING ON ALL YOUR DEVICES**

**CALL TODAY! Plus ... Switch to DISH and GET A FREE \$100 GIFT CARD**

**1-877-756-0437**

Se Habla Español  
Call 7 days a week 8am - 11pm EST

Offer for new and qualifying former customers only. Important Terms and Conditions: Qualification: Advertised price requires credit qualification and 24-month commitment. 2-year price guarantee is limited to 2-year price guarantee of \$59.99/mo. (includes all taxes, fees, and charges). 190 channels is limited to 190 channels. All offers are subject to change without notice. See website for details. \*All offers require credit qualification. 24 month commitment with early termination fee and standard fees. Prices include Hopper Duo for qualifying customers. Hopper Duo requires 24-month commitment. Hopper Duo is not available in all areas. See website for details.

**Tax Problems: RESOLVED**

**Millions Of Dollars Saved In Back Taxes**

Anthem Tax Services provides world class personalized tax debt relief and tax preparation services. We offer the tailored experience that you expect from your tax preparation professionals, and we operate remotely so you never need to leave your home or office.

Tax debt can happen to anyone. Whether you are self-employed, an independent contractor, took an early withdrawal from a 401k, or had another unforeseen life event occur, we can help resolve your debt in a few simple steps:

1 Opportunity 2 Investigation 3 Agreement 4 TAX DEBT FREE!

"They stopped my garnishments in less than 2 days after hiring them. This saved me \$84,276 with the IRS and \$13,500 with the state of California. They saved my emotional and financial well-being."

- Wage Garnishment Client

**Best Company**  
RECOMMENDED BY  
The Credit Review

Call us now for your FREE tax consultation & evaluation:  
**877-370-2127**

**There are many ways we can tackle IRS or State tax relief together:**

- ✓ Tax Levies & Liens Release
- ✓ Wage Garnishment Release
- ✓ Stop Penalties and Interest
- ✓ Tax Debt Negotiation & Settlement
- ✓ Resolve Back Taxes
- ✓ Payroll Tax Negotiation
- ✓ Tax Preparation & Bookkeeping Services

**Anthem Tax Services**

Anthem offers a money-back guarantee designed to help you avoid wasting money on ineffective tax services. We will gather as much information from you as necessary and work with tax authorities to give you the best chance of reducing your tax debt. If for any reason that does not work out, and the government notifies us they refuse to reduce your overall tax liability or monthly payments by any amount, we will gladly refund you the fees you paid for our services in trying to reduce that debt. Money Back Guarantee does not apply to book-keeping and tax preparation services.

## ESTATE SALE - LOG HOMES PAY THE BALANCE OWED ONLY!!!

AMERICAN LOG HOMES IS ASSISTING JUST RELEASED ESTATE & ACCOUNT SETTLEMENT ON HOUSES.

### 4 Log Home kits selling for BALANCE OWED, FREE DELIVERY

- 1) Model # 101 Carolina \$40,840...BALANCE OWED \$17,000
- 2) Model # 203 Georgia \$49,500...BALANCE OWED \$19,950
- 3) Model # 305 Biloxi \$36,825...BALANCE OWED \$14,500
- 4) Model # 403 Augusta \$42,450...BALANCE OWED \$16,500

**BEFORE CALLING: VIEW at [www.loghomedream.com](http://www.loghomedream.com) Click on House Plans**

#### NEW - HOMES HAVE NOT BEEN MANUFACTURED

- Make any plan design changes you desire!
- Comes with Complete Building Blueprints & Construction Manual
- Windows, Doors, and Roofing not included
- NO TIME LIMIT FOR DELIVERY!

BBB  
A+ Rating

\*OFFER NOT AVAILABLE TO AMERICAN LOG HOME DEALERS\*

**SERIOUS ONLY REPLY.** Call (704) 602-3035 ask for Accounting Dept.

## NOTICE OF PUBLIC HEARING ON TAX INCREASE

A tax rate of 0.774604 per \$100 valuation has been proposed by the governing body of City of Jacinto City.

PROPOSED TAX RATE	\$0.774604 per \$100
NO-NEW REVENUE TAX RATE	\$0.726136 per \$100
VOTER-APPROVAL TAX RATE	\$0.774714 per \$100
DE MINIMIS RATE	\$0.823322 per \$100

The no-new-revenue tax rate is the tax rate for the 2020 tax year that will raise the same amount of property tax revenue for City of Jacinto City from the same properties in both the 2019 tax year and the 2020 tax year.

The voter-approval tax rate is the highest tax rate that City of Jacinto City may adopt without holding an election to seek voter approval of the rate, unless the de minimis rate for City of Jacinto City exceeds the voter-approval tax rate for City of Jacinto City.

The de minimis rate is the rate equal to the sum of the no-new-revenue maintenance and operations rate for City of Jacinto City, the rate that will raise \$500,000, and the current debt rate for City of Jacinto City.

The proposed tax rate is greater than the no-new-revenue tax rate. This means that City of Jacinto City is proposing to increase property taxes for the 2020 tax year.

A public hearing on the proposed tax rate will be held on September 10, 2020 at 5:30 PM at 10301 Market Street, Houston, TX 77029.

The proposed tax rate is not greater than the voter-approval tax rate. As a result, City of Jacinto City is not required to hold an election at which voters may accept or reject the proposed tax rate. However, you may express your support for or opposition to the proposed tax rate by contacting the members of the City of Jacinto City at their offices or by attending the public meeting mentioned above.

**YOUR TAXES OWED UNDER ANY OF THE ABOVE RATES CAN BE CALCULATED AS FOLLOWS:**

$$\text{property tax amount} = (\text{tax rate}) \times (\text{taxable value of your property}) / 100$$

The members of the governing body voted on the proposed tax increase as follows:

#### FOR:

Jimmy Rivas  
Allen Lee  
Mario Gonzales

Gregg Robinson  
Carmela Garcia

#### AGAINST:

PRESENT and not voting:

ABSENT:

The 86th Texas Legislature modified the manner in which the voter-approval tax rate is calculated to limit the rate of growth of property taxes in the state.

The following table compares the taxes imposed on the average residence homestead by City of Jacinto City last year to the taxes proposed to be imposed on the average residence homestead by City of Jacinto City this year:

	2019	2020	Change
Total Tax Rate (per \$100 of value)	\$0.783554	\$0.774604	decrease of -\$0.008950 OR
Average homestead taxable value	\$60,915	\$68,140	increase of 11.86%
Tax on average homestead	\$477	\$528	increase of \$51 OR 10.58%
Total tax levy on all properties	\$3,637,228	\$3,921,392	increase of \$284,164 OR 7.81%

For assistance with tax calculations, please contact the tax assessor for City of Jacinto City at 713-274-8000 or [tax.office@jctx.net](mailto:tax.office@jctx.net), or visit [www.hetax.net](http://www.hetax.net) for more information.



# Hurricane Relief to Disaster Areas,

CONTINUED FROM PAGE 1

recovering from Hurricane Laura. The following items are needed: 1. Tarps, 2. Non-perishable food items, 3. Batteries, 4. Water, 5. Diapers (size 3, 4 and 5), 6. Baby wipes, 7. Disinfectant wipes.

Private efforts including Project Hope (844) 349-0188, supporting health-care workers worldwide, Samaritan fund, and others like the Red Cross re gathering donations.

Saturday, Houston Mayor Sylvester Turner indicated the city is partnering with several local businesses and entities to gather donated supplies for residents who were hit by Hurricane Laura.

The city's Health Equity Response Task Force, Kroger, Gallery Furniture and Relief Gang are coordinate a hurricane relief effort called "Houston's Paying It Forward."

"After Hurricane Harvey displaced many of our family and friends in 2017, people from other cities and states helped Houston recover by donating their time, money and supplies," Turner said. "Today, we are being called to action for our neighbors who were in the path of Hurricane Laura and are now experiencing great suffering and loss. We cannot sit idly by while they are in need."

All donated items given to the drive will be sent to Port Arthur, Orange and Beaumont, Texas, as well as Sulphur and Lake Charles, Louisiana. Supplies will be distributed to residents trying to recover after their homes and personal belongings were damaged or destroyed by the devastating category 4 hurricane.

The task force started taking donations on Tuesday, September 1.



HTown Meals for Hurricane Laura has a goal of \$12,000 from online donations plus water, cleaning products, hygiene and non-perishable foods are getting collected from the George R. Brown Convention Center and Krogers and Gallery Furniture.

National efforts include that President Donald J. Trump amended the emergency declarations for Louisiana and Texas. The President's action expands the declarations to cover emergency protective response actions that state, local and tribal officials take in the areas affected by Hurricanes Laura and Marco beginning Aug. 22, 2020 and continuing.

FEMA received a request for a disaster declaration from Arkansas Gov. Asa Hutchinson on Tuesday night. The Governor is specifically requesting emergency protective measures, including direct Federal assistance, under the Public Assistance program statewide. The request is under review.

FEMA has mobilized federal response teams to support Louisiana, Texas and Arkansas response efforts to the Hurricane. Regional Incident Management Assistance Teams (IMATs) are in place in Arkansas, Louisiana, Mississippi and Texas state operations centers. National IMATs are also deployed to Baton Rouge, Louisiana and Denton, Texas. Additionally, several members of the national IMAT are deployed to Louisiana.

In Louisiana, Acadia, Allen, Ascension, Assumption, Beauregard, Calcasieu, Cameron, East Baton Rouge, East Feliciana, Evangeline, Iberia, Iberville, Jefferson, Jefferson Davis, Lafayette, Lafourche, Livingston, Orleans, Plaquemines, Pointe Coupee, St. Bernard, St. Charles, St. Helena, St. James, St. John the Baptist, St. Landry, St. Martin, St. Mary, St. Tammany, Tangipahoa, Terrebonne, Vermilion, Washington, West Baton Rouge and West Feliciana parishes, are eligible for reimbursement for eligible emergency protective measures (Category B). These parishes were previously limited to direct federal assistance, and reimbursement for mass care including evacuation and shelter support.

# EPA approves release of GMO mosquitos in Harris County

Approval by county, state needed before release

HOUSTON — A project involving the release of millions of genetically modified mosquitoes beginning in 2021 has been approved by federal authorities, and Harris County is one area in which the pilot program could go forward, according to a report by CNN.

Oxitec, the U.S.-owned, British-based company that developed the engineered species, announced the Environmental Protection Agency (EPA) granted the company an experimental use permit (EUP) to field test the use of genetically engineered *Aedes aegypti* mosquitoes. The company's aim through the test is to protect public health from mosquito-borne illnesses.

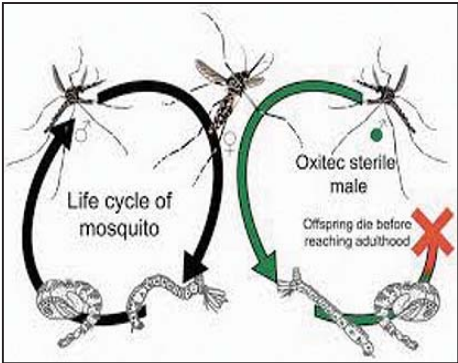
According to CNN, "the genetically engineered mosquito, named OX5034, has been altered to produce female offspring that die in the larval stage, well before hatching and growing large enough to bite and spread disease."

According to a media statement by the EPA, field tests will first be conducted in Monroe County, Fla. following state and local authorities' approval.

"The EUP is designed to test the effectiveness of genetically engineered *Aedes aegypti* mosquitoes as a way to reduce mosquito populations in a controlled environment with appropriate safeguards as a first step to potentially wider use in the United States," the statement reads.



GMO Mosquito



GMO Mosquitos die before maturity.

The genetically engineered mosquitoes are approved to be released into Harris County beginning in 2021. To go forward with this pilot program, state and local approval would be needed, but that's not yet been granted, according to Harris County Public Health's Sam Bissett, who spoke with CNN.

"Local health officials confirm that there is no agreement in place or plans to move forward with the project at this time," Bissett told CNN.

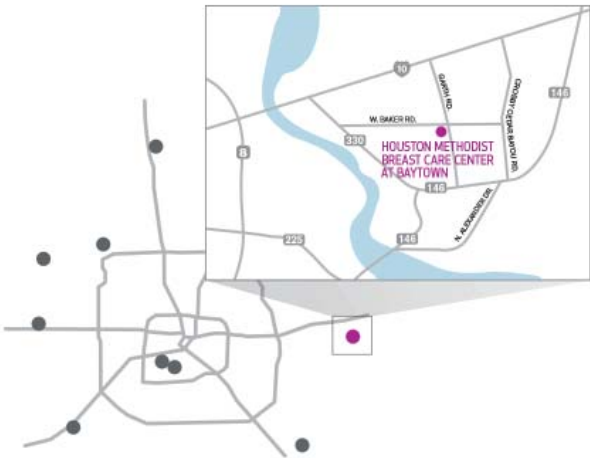
"Our focus is on our efforts with the Covid-19 pandemic."

The planned release in Florida is not without controversy, with local residents and a coalition of environmental advocacy groups speaking out.

# Getting your annual mammogram is still important.

## Houston Methodist can see you safely.

Getting your annual mammogram is one of the most important steps you can take to stay healthy. That's why our Breast Care Center in Baytown is taking every necessary precaution during the coronavirus pandemic to keep you and our staff members safe.



Visit [houstonmethodist.org/breast-care](https://houstonmethodist.org/breast-care) or call **346.292.PINK (7465)** to schedule your mammogram today. We do not require a doctor's order for your annual screening mammogram.

HOUSTON  
**Methodist**  
BREAST CARE CENTER

## During the coronavirus pandemic, we are:



**Screening all patients**, ensuring only those without COVID-19 symptoms are seen in the office.



**Wearing masks** and other personal protective equipment while providing patient care.



**Implementing additional sanitation processes** to disinfect all equipment and surfaces.



**Redesigning waiting rooms and check-in procedures** to ensure social distancing.

